



## The OptoLum Difference

OptoLum is not just another company putting LEDs on a circuit board and selling them as lighting. We started from the ground up by analyzing the advantages and limitations of LEDs and built a complete system approach that delivers maximum results. OptoLum has garnered one U.S. patent and has several others pending both in the U.S. and abroad.

## Licensing Opportunities

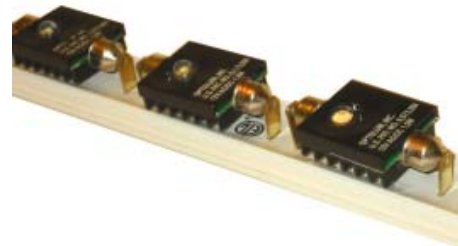
OptoLum is a leading innovator in LED lighting technologies and was the first to focus primarily on thermal management. OptoLum has developed extensive resources and key intellectual property regarding thermal management of LED lighting systems and will happily work with reputable lighting companies to jointly commercialize solid-state lighting applications.

## Thermal Management

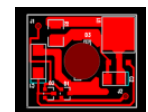
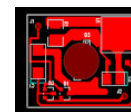
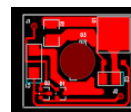
OptoLum is expert at thermal management of high brightness, high power LEDs. The key to LEDs achieving their promised longevity and efficiency is maintaining them within comfortable temperature ranges. With today's super output LEDs that is no simple task, but OptoLum has developed a system that naturally cools the LEDs and insures long life and efficiency.

## OEM Opportunities

The festoon lamp and other OptoLum lamps offer original equipment manufacturers the opportunity to incorporate LED lighting into existing light fixtures and various other applications including: aircraft, appliances, automobiles, marine vessels, etc. The OptoLum team will happily work to meet your needs.



### **Technology beyond the bulb**



# Specifications

## OptoLum Festoon Lamp

### Low Voltage Miniature Lamp

#### General Description

Low voltage festoon type Light Emitting Diode (LED) solid-state lamp. 200 mA, 1.2 W, 7.5 to 12 V, AC/DC operation.

#### Construction

Overall length is 44mm. Overall height is 10mm. Overall width is 23mm. Machined aluminum base for heat dissipation. Lamp designed for use in linear light strips.

#### Lamp Life

Average rated lamp life for 12V 1.2W LED lamp is in excess of 70,000 hours. Lamp life is derived from a formula that includes known LED tolerance and actual stress applied.

#### Compatible Systems

Operates with linear lighting systems from Ardee Lighting, Lucifer Lighting, Radiant/Belfer Lighting, et. al. Drop in replacement for 12 VAC, 3 W and 5 W incandescent, halogen, and xenon festoon lamps. Works perfectly with 12 volt AC systems. Performance is enhanced in new installations by utilizing 7.5 volt DC power supply.



#### Available Colors

3200K white, 5500K white, Green, Blue, Royal Blue, Cyan, Red, Red-Orange, Amber.  
Note: Blue and Royal Blue lamps are rated IEC825, Class 2 for eye safety



#### Applications

Architectural coves, signage, retail displays, store fixtures, under-counter, cruise ships, aircraft, military, automotive, machine vision, laboratories, clean rooms, and more...

**U.S. Patent Number 6,573,536**

\* Multiple U.S. and International Patents Pending



**OptoLum, Inc.**

4238 E. Weldon Ave.  
Phoenix, AZ  
8 5 0 1 8  
Tel: 602.952.8464  
Fax: 602.952.8465

[info@optolum.com](mailto:info@optolum.com)  
[www.optolum.com](http://www.optolum.com)